

UPCOMING EVENTS

Alumni Work Weekend

April 5-7

See full details to the right.

Homecoming 2013

October 26

vs. Michigan State

TRADITIONS

Gone, but Not Forgotten?

Ian Santarinala '02 reports: "The actives keep asking what traditions, plaques, etc. that we used to do but are no longer."

Here is a start of a list. Weigh in on these or other traditions you remember that are "gone but not forgotten" on the message board at www.spdillini.org.

- Chief's Plaque(s)
- Pass the Gavel
- Paddles
- Stickers on Paddles
- Horse's Ass Award
- The Sigma Phi Delta Letters in the Living Room
- The Giant Paddle
- Drop Day Party
- PI Kraps Water Balloon Fight
- DOP

GOLF ANYONE?

Donors eligible to win Top Golf gift certificate!

To be eligible, set up a new recurring donation OR make a one-time donation of \$50 or more now through April 15. Gift certificate includes six games and a 30-minute video swing analysis (value of \$100).

To donate, return the enclosed form with your check, or go to www.spdillini.org.

Delta Chapter of Sigma Phi Delta Fraternity

February 2013

Delta Dispatch

www.spdillini.org

University of Illinois, Champaign, Illinois



ALUMNI WORK WEEKEND

Fun, Sweat and Cheers

Give Back to Delta Chapter in a Hands-On Way

By Patrick Cox '01 (W18001@email.mot.com)

You can give back to Delta Chapter without donating a dime. Contribute your time instead! Come back to Champaign the weekend of April 5-7 to visit the campus and help with some improvements at the house.

Friday night we'll gather for a Meet and Greet and rent out a section at a local bar, then on Saturday morning we'll get to work (as much as that is possible after a late night out). The Alumni Association will host dinner Saturday night and pick up the tab for anyone donating time and effort toward the weekend's improvements and repairs. It's a great way to reconnect with your brothers while giving back to SPD.

Here are the projects on the list to be completed:

- Complete strip down and refinish of the wood floors in the living room. We are looking for the alumni who, in their days as actives, were the "go-to guys" on the refinishing of the floor, to pass along their techniques of this long-standing tradition
- Steam clean carpets
- Replace paneling and broken ceiling tiles in



A picture from last year's Alumni Work Weekend showing the 60-foot boom lift we rented to clean the gutters and repair and paint the trim and eaves.

third floor bathroom

- Replace wall paneling in chapter room
- Replace broken drop ceiling tiles in kitchen and dining room
- Refinish chair rail and wood paneling in dining room
- Come to my house and build a playroom in my basement since Amanda is pregnant... with twins! Oh wait, sorry, wrong list.

Sign up today at www.spdillini.org!

TREASURER'S REPORT

Delta Alumni Finances, By the Numbers

Declining Donations Lead to Income Shortfall, Your Help Needed to Rebound

By Rick Woods '86, Treasurer, Delta Alumni of Sigma Phi Delta, Inc.

Delta Alumni finances continue to be sound, but our income is running about \$11,000 behind plan. This is due to the chapter being behind in rent for two months after the start-up glitches with Greek Capital Management. We are working through these issues with GCM and the

active chapter. Thus far in the fiscal year we have received \$5,339 in donations. This is running about \$1,900 ahead of same period last year. To all those who have donated, thank you!

We have spent \$37,800 of our annual expense budget of \$68,500 (55% of our budget).

(Continued on Page 2)

TREASURER'S REPORT

Delta Alumni Finances, By the Numbers... *Continued from page 1*

The major expenses during this period:

- \$9,000 in property taxes (due in June and September)
- \$11,200 for carpet in the common area and the new resin basement floor
- \$5,460 in mortgage payments
- \$4,546 in payments to Affinity Connection. Of this, \$2,155 was for web site and database management, and \$2,140 for newsletters and other publications, e-blasts, donor acknowledgement cards and postage.
- Our Building Fund balance stands at \$35,550, which is \$1,950 (+5.8%) better than the start of the fiscal year and \$5,444 (+18.1%) better than the start of holding our Building Fund cash in ETF's (we started this November 2009).

Where Do Chapter Rent Monies and Alumni Donations Go?

Alumni might be interested in knowing where their donations go and how our expenses break out. Generally, the rent we collect

from the chapter goes towards servicing our mortgage and paying for the chapter house operating expenses we cover. These expenses (estimated on an annual basis):

- Mortgage — \$9,360
- Property taxes — \$9,088
- Property and boiler insurance — \$5,500
- House maintenance including Alumni Work Weekend — \$5,500
- Sewer, water and recycling fees — \$4,200
- Fire alarm service, fire extinguisher service, alarm and sprinkler inspections and back-up phone line (for alarm) — \$2,400
- Workman's comp (for Jim Callahan, the chapter house cook) — \$1,000

Alumni donations generally cover our alumni outreach and scholarship expenses, including the work that our outreach partner Affinity Connection performs on our behalf. Because our donations have declined in recent years, more of these expenses are being covered by our rent collection from the chapter, a trend

that we need to reverse. Our alumni and outreach expenses include:

- Alumni outreach — direct mail including postage, e-blasts — \$6,600 (actual spent the prior fiscal year)
- Database and web site management - \$3,315
- Scholarship and rush assistance — \$2,200
- Annual meetings, honoriams and memorials — \$2,200
- Annual donation to National — \$500

Capital improvements are covered by a combination of donations, rent and the judicial use of our Building Fund. This year we budgeted nearly \$17,000 in major house improvements, of which we have already spent \$11,200 on the basement resin floor and new carpeting in the common areas.

As the chapter house ages, our ability to maintain and improve the house is becoming more difficult and more expensive. Now, more than ever, we need our fellow alumni to assist with their donations of time and money.

AT THE HOUSE

More Sound Financial Footing, Thanks to Successful Rent Payment Service Actives Perfect Rent Payment Rate, but Need Alumni Support to Maintain Aging House

By Tom Dagenais '99, Alumni Relations Chair

If you've ever taken a college-level macroeconomics course you know that every financial action has a multitude of consequences, and figuring out what those consequences may be has kept a lot of people gainfully employed.

One of the problems threatening our chapter's existence has always been the risk of the active chapter not paying rent. And let's face it, very few of the existing alumni saw a four-year period as an undergrad in which the active chapter made every rent payment in full to the alumni corporation. In recent decades you'd be hard pressed to even find a two-year period in which rent was always paid in full. There were always mitigating circumstances (uncollected house bills, unforeseen expenses, the need to throw the best party on campus, etc.).

With this in mind, a few years back the alumni association encouraged the active chapter to start using an accounting firm that specializes in fraternities and sororities. The accounting service has been instructed to

prioritize the rent payment over other budget items, like intramural sports fees, the social budget, etc. By being paid first, the alumni association is kept on more sound financial footing. The results have been impressive. House bill collection is way up and the rent payment rate to the alumni has been nearly flawless. (We are currently working through some transition issues as the active chapter has signed with a new service, Greek Capital Management, that is being used by all Sigma Phi Delta chapters. This new service provides a group discount to give the actives a broader range of services for a lower price.) This has all been great for the health of the chapter and has allowed the alumni corporation to keep up with the rising costs of maintenance, taxes, and insurance on a 90-year-old house.

One side effect is that this leaves the active chapter with a lot less expendable cash. For the most part, less expendable cash in the hands of college kids is probably a good thing,

but we are noticing some unintended consequences. For instance, the active chapter has always been responsible for purchasing furniture for the common areas. The new accounting service is forcing the actives to make required payments before paying for things that are not strictly needed, such as new furniture, and each semester the house furniture falls further into disrepair.

It is for these reasons that the alumni board has been considering working with the actives to purchase new furniture for the chapter house. This certainly is a break from tradition, but if we do not change with the times we are doomed to fail. Well, maybe not fail, but we are doomed to sit on broken, stained and stinky furniture at Homecoming. And nobody wants that.

Stay tuned for ways you can get involved to help preserve our house—both inside and out.

ALUMNI UPDATES

Hubert C. Edfors '57

(6S. 180 New Hope Road, Naperville, IL 60540; hcedfors@att.net) I saw the response from **Joe Kennel '58** on his experience at Delta Chapter. My recollections mirror his comments and I look back at it as a wonderful experience. It brought some social life to the time at that big school which would be missing otherwise.

Duane P. Larson '71

(6740 Camphor Place, Carlsbad, CA 92011; dl Larson2@att.net) The current actives may not know that when I was in school during hell night in the fall of 1969, one of the pledges could not take the stress. He ran away and we spent the next several hours searching for him all over town. What I miss most about living in Urbana-Champaign is the political and social involvement of the campus in significant events. In two years' time the National Guard was called to campus to keep order, the first Earth Day was held and the concrete canoe races were initiated. There was one song that defined my college experience "Proud Mary." In '69 it played nearly continuously on the jukebox in Stan's, the bar east of Kam's, which sadly no longer exists. Right now, I am semi-retired and plan to fully retire this year. This year we plan to take several long trips to Africa, Asia and Scandinavia.

Richard L. Mange '86

(1220 Robin Drive, Keller, TX 76262; richard.l.mange@lmco.com) My favorite tradition is the Chief, and the why is obvious! When I was in school, we had a beer machine in the dining room. What I miss most about living in U-C is being able to walk everywhere I needed to go. "Freebird" is the song that describes my college experience because, "Why not?". I have joined the University of Illinois Department of Aerospace Engineering Alumni Advisory Board. As such, I will be getting back to campus at least once a year now in the fall to attend the annual meeting on a Friday and a football game on Saturday.

Steve Frisbie '00

(754 W La Pryor Lane, GILBERT, AZ 85233; stevefrisbie@hotmail.com) After 12 years in Arizona, I've moved back to central Illinois. With three kids, we really felt the pull to live near family. I live in Effingham and work in Mattoon as a Process Engineer for GE. Hopefully I'll be able to make it to some of those fraternity alumni get-togethers.

Peter S. Lindquist '01

(509 Bardeen Lane, Champaign, IL 61822-1090; pslindquist@comcast.net) I still live in Urbana-Champaign; it's a wonderful town to raise a family in. It has the culture of the

university but still has that small-town feel and moves at a comfortable pace. Anyone coming back to the area obviously needs to give me a ring! On November 24th I married Angela Noelle Ellis here in Urbana-Champaign with brothers **Jeremy Porter '99** and **Aaron Leppin '00** standing by my side! She's a fifth grade teacher at Urbana Prairie Elementary School and is looking forward to meeting all the guys at the upcoming Alumni Work Weekend. I do want to thank all the brothers who were able to make it in for the wedding to help make the day more special for Angela and me!

What's new with you? Share your news, updates, photos and more at www.spdillini.org.

IN MEMORY

We have recently learned of the passing of the following brothers...

T. Paul Torda
Gordon Brown '29
George Zimmer '45
Scott Covey '93

Delta Chapter mourns their passing and extends condolences to their families and friends.

CHAPTER REPORT

Ramping Up for Rush

SPD Sets Goals to Boost Membership Numbers, Maintain Tradition of Academic Excellence

Rush at the house is beginning to ramp up. With six rush events scheduled, SPD is hoping to boost numbers after a smaller-than-average fall class of five pledges. We also have a philanthropy planned for March with AOE, the local engineering sorority.

In the recently initiated fall '12 class, Sigma Phi Delta welcomed **Antonio Kim**, a legacy of **Mikael Kim** (fall '10). As Mikael prepares to graduate in the spring he can be proud to know his brother will keep up the standards of excellence he himself strived for as a brother in SPD.

The new president of the active chapter, **Nick Boomer**, has big plans for improvement this semester. Fixing up the dormitories on the third floor will be a big project the actives will tackle early this semester to get ready for EIT and other events. He says the biggest goal this semester is to improve grades and keep up the tradition of academic excellence Sigma Phi Delt is known for.

OLD PHOTO ALBUM



Thank you to **Edward Wicus '75** for submitting this and some other great photos from the early 1970s. You can view his other submissions, and share your own, in the archive albums at www.spdillini.org.

IN YOUR WORDS

Brothers Weigh In On Life Lessons

Thank you to the following brothers for sharing their stories in response to these questions.

Tell us the story of a brother who served as a role model to you.

"I took a class that covered a very confusing topic for me: Infinite Square Wells. I think the topic was difficult because my professor (I don't remember who it was) never explained what he was going to teach. I was in tears of frustration at a round table in the basement of the house during a group study session, and Bro. **G.Bryan Davis** took me aside and calmed me down. He explained it, and

showed me how an ISW is used to represent quantum particle behavior and why. G.Bryan is a rocket scientist. Since then, I have in my own experience used the following method for teaching: 1) Tell what you are going to teach, 2) Teach, 3) Tell what you taught. Thanks, G.Bryan."

Andy Hill '88

How are the values you learned in SPD still making an impact in your life today?

"The SPD values of ethical treatment of others and honesty have served me well in my career. Also, being part of the Fraternity

helped me overcome my introverted nature and taught me how to interact with a variety of people and personalities, for our mutual benefit. In my career, being extroverted and being able to interact positively with all sorts of people has been a huge benefit. I can trace back all of these capabilities and attributes to my decision to be part of Sigma Phi Delta."

- Scott Steele '90

Share your responses to these questions and others at www.spdillini.org.

FROM THE ARCHIVES

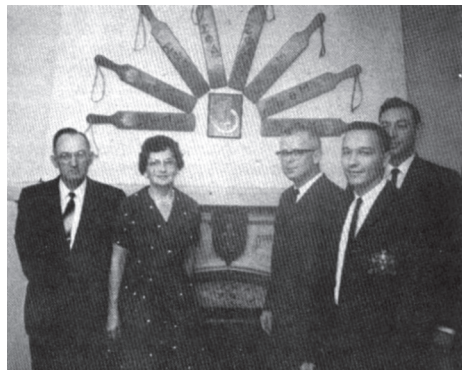
Dedication of Delta Chapter House, Circa 1962

Celebrating 50 Years at 302 East Gregory Drive

By Curtis Schubert '64

In celebration of Delta Chapter's 50th year at 302 East Gregory Drive, we hope you enjoy this article that was originally published in the Castle in the 1960s. We had to condense this article for space to fit in the Delta Dispatch, but please visit www.spdillini.org to read the full article and to share your own memories from your days living in the house.

On Saturday, October 26, 1962, the new Delta chapter house was dedicated by Grand President Bob Beals. At the same time, Bob dedicated the Kieth E. Kidwell memorial plaque. Attending the dedication were Dr. and Mrs. Robert J. Beals; Mr. and Mrs. Bryan Beals, Bob's parents; Mr. and Mrs. Charles E. Peterson; Dean and Mrs. W. L. Everitt, Dean



In this photo (L to R): Mr. and Mrs. J.B. Kidwell, R.J. Beals, Gary G. Hunt (Chief, Delta Chapter) and B.J. Caccioppo (President, Delta Alumni).

of Engineering; Dean Opperman, Assistant Dean of Engineering; Mr. and Mrs. Stan Helm and Mr. and Mrs. W. Berkow, and Mr. and Mrs. S. Stillwell, faculty members; Barney Caccioppo, Delta Alumni president; Mr. and Mrs. Kidwell; other members of the Alumni chapter; and the actives and pledges of Delta chapter.

The Kieth E. Kidwell memorial plaque is a bronze casting of the fraternity crest which replaces the A E Pi crest above the fireplace in the library. Kieth graduated in E.E. in February 1962. He was killed in an auto accident in December 1962, when he was on his way to visit Delta Chapter. The memorial was provided by Kieth's parents. An identical plaque, the George Hunt memorial, occupies a similar spot over the fireplace in the living room.

The dedication on Saturday evening followed a banquet that was served in the newly-paneled dining room in the basement of the chapter house. Fifty-eight persons, including guests, actives and pledges, were served with a catered meal. After the dedication ceremony, the Delta Alumni chapter sponsored a dance.

The new Delta chapter house is a brick building at 302 E. Gregory Drive, Champaign, Illinois. It was purchased from the Alpha Epsilon Pi Fraternity who built it in 1927. The house has three large study rooms on the third floor, as well as the dorm. All members and pledges sleep in this dorm on the third

floor. There are 10 rooms on the second floor suitable for two-man study rooms. The general organization is study rooms with desks, dressers and closets; and everyone sleeps in the common dorm. The first floor has a large living room, a chapter room, a library and three large study rooms. It is planned that the three study rooms can someday be converted into a house mother's apartment. The basement has the kitchen, dining room, food storage room, one study room and the furnace room. The house can comfortably hold 40 men. Delta is proud of their new house; but the next few years getting it operating smoothly won't be any simpler than the last few years that led up to the moving in.

During the school year of 1961-1962, Delta was located in a 25-man frame house at 1103 W. Illinois St., Urbana. Many alumni have fond memories of school years spent at this house, but the house was old, small and not very well suited to fraternity living. For several years efforts had been made to find a more suitable location for Delta Chapter. These efforts were spurred in 1961 by notification from the University of Illinois that the property was to be bought for University expansion. An initial effort to buy the Sigma Alpha Epsilon house ended when they decided not to sell.

Read the rest of this story at www.spdillini.org.